

Cambridge International Examinations



0400 Art & Design IGCSE

Paper 2: Interpretative Study

Standards November 2007

Standard 100

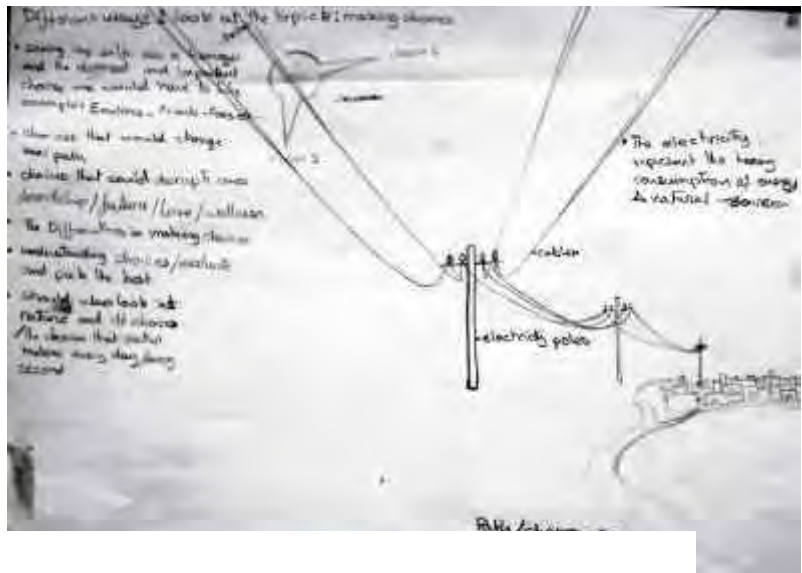
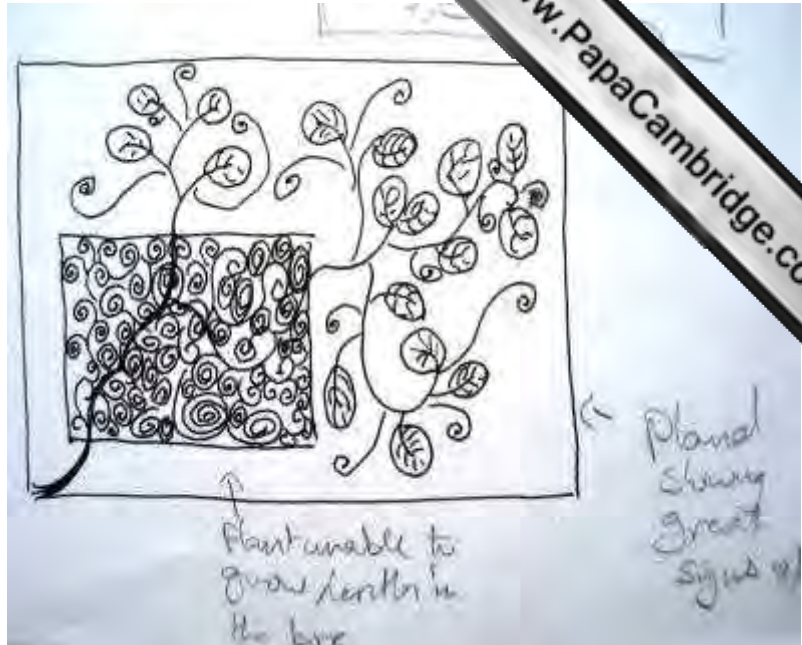
A: Knowledge with Understanding			
1	recognise and render form and structure	15	15
2	appreciate space and spatial relationships in two or three dimensions and understand space in terms of pictorial organisation	15	15
3	use chosen media competently, showing clarity of intention and be able to explore surface qualities	10	10
4	handle tone and/or colour in a controlled and intentioned manner	10	10
B Interpretative and Creative Response			
5	express ideas visually	7	7
6	respond in an individual and personal way	7	7
7	demonstrate quality of idea as seen by interpretation rather than literal description of a theme	10	10
8	make informed aesthetic judgements	6	6
C Personal Investigation and Development			
9	show personal vision and commitment, through a mature and committed response	10	10
10	research appropriate resources	5	5
11	assess a design problem and arrive at an appropriate solution	-	
12	show development of ideas through appropriate processes, worksheets before arriving at a final solution	5	5



Detail



Final piece

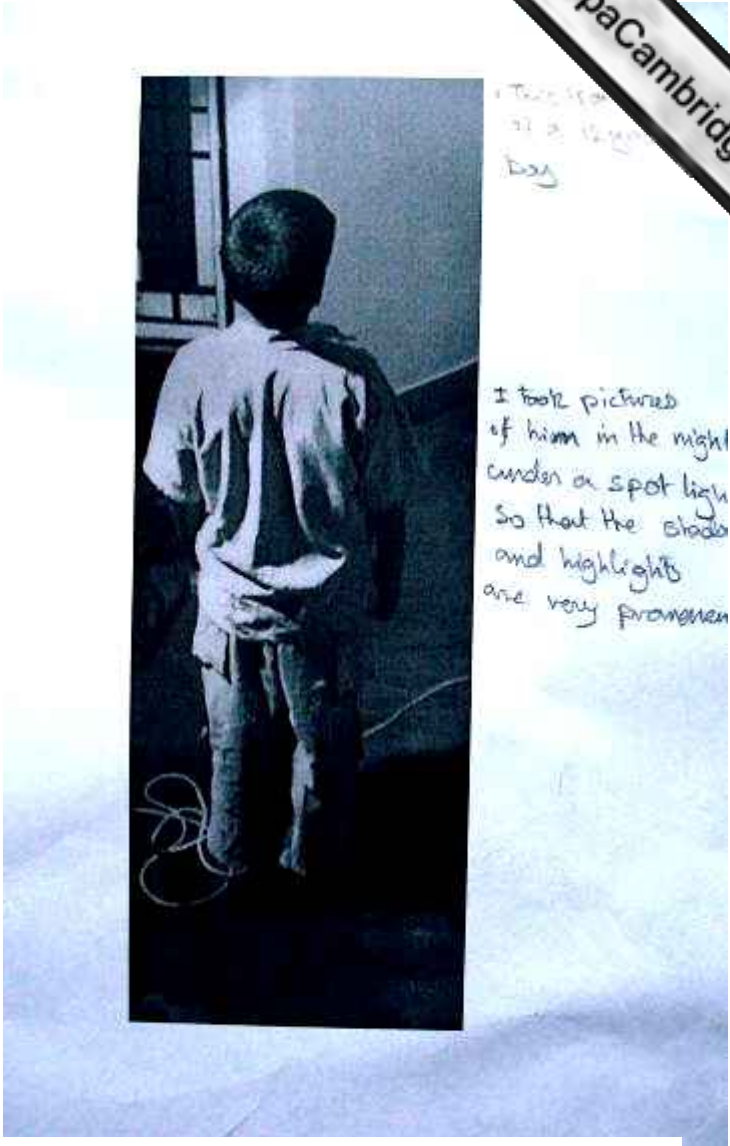




Telephone poles

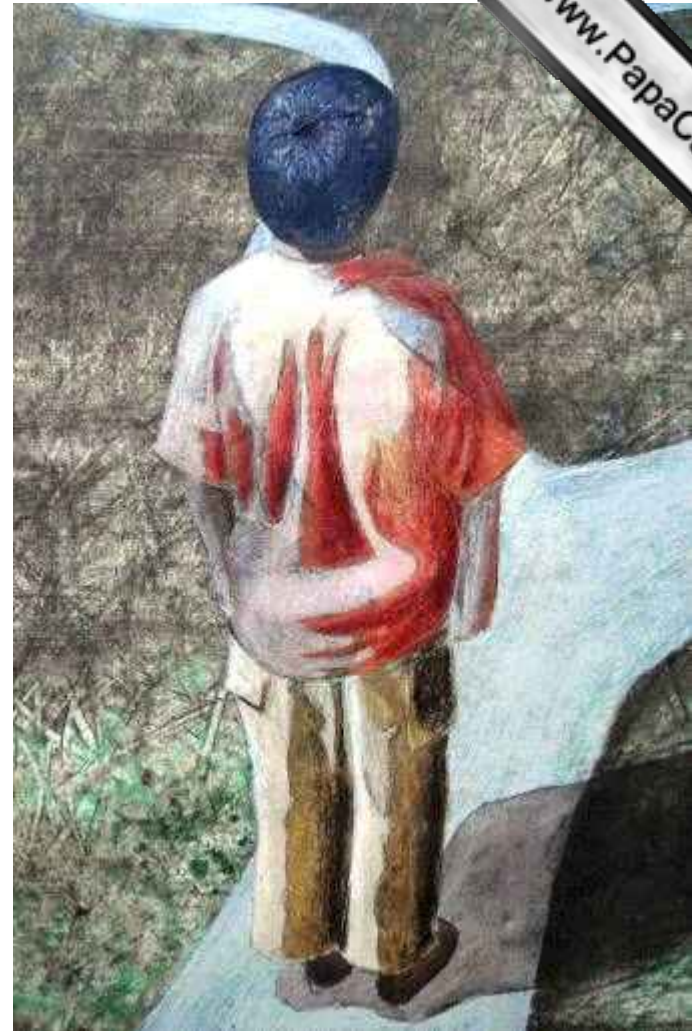


Wires
Cement poles



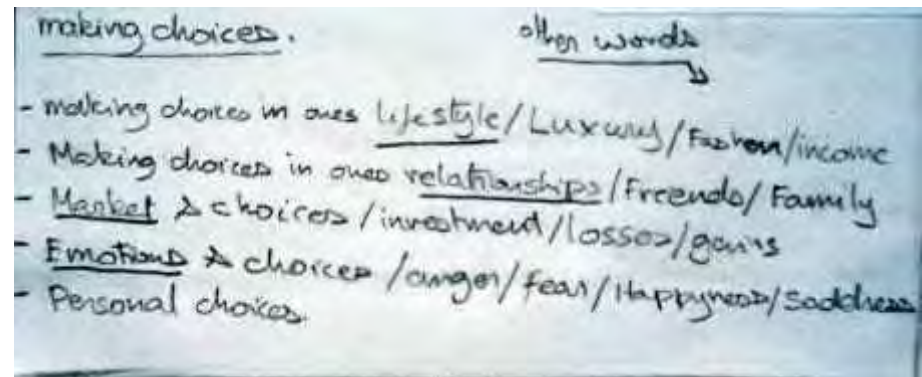
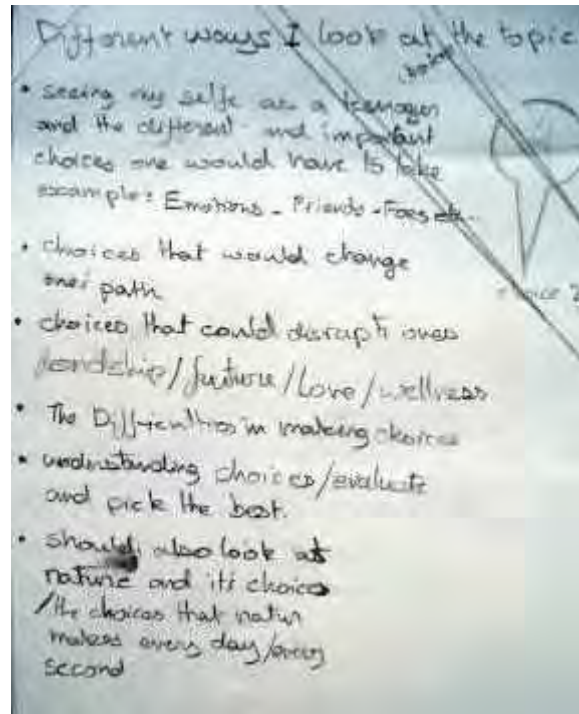
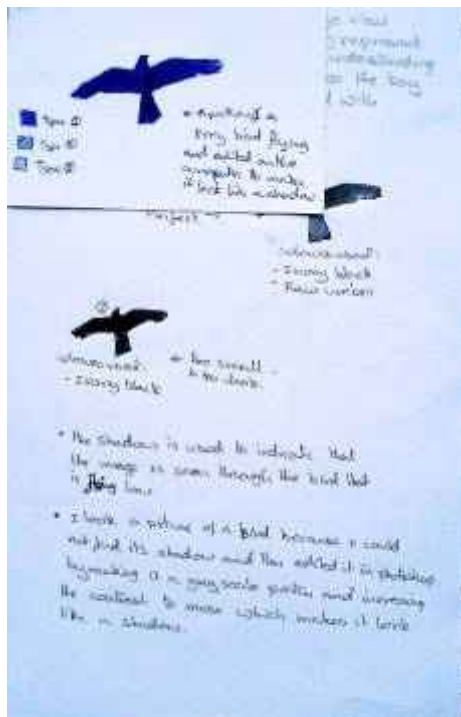
1950
12 2 1950
Boy

I took pictures of him in the night under a spot light so that the shadows and highlights are very prominent



www.PapaCambridge.com

Preliminary Studies

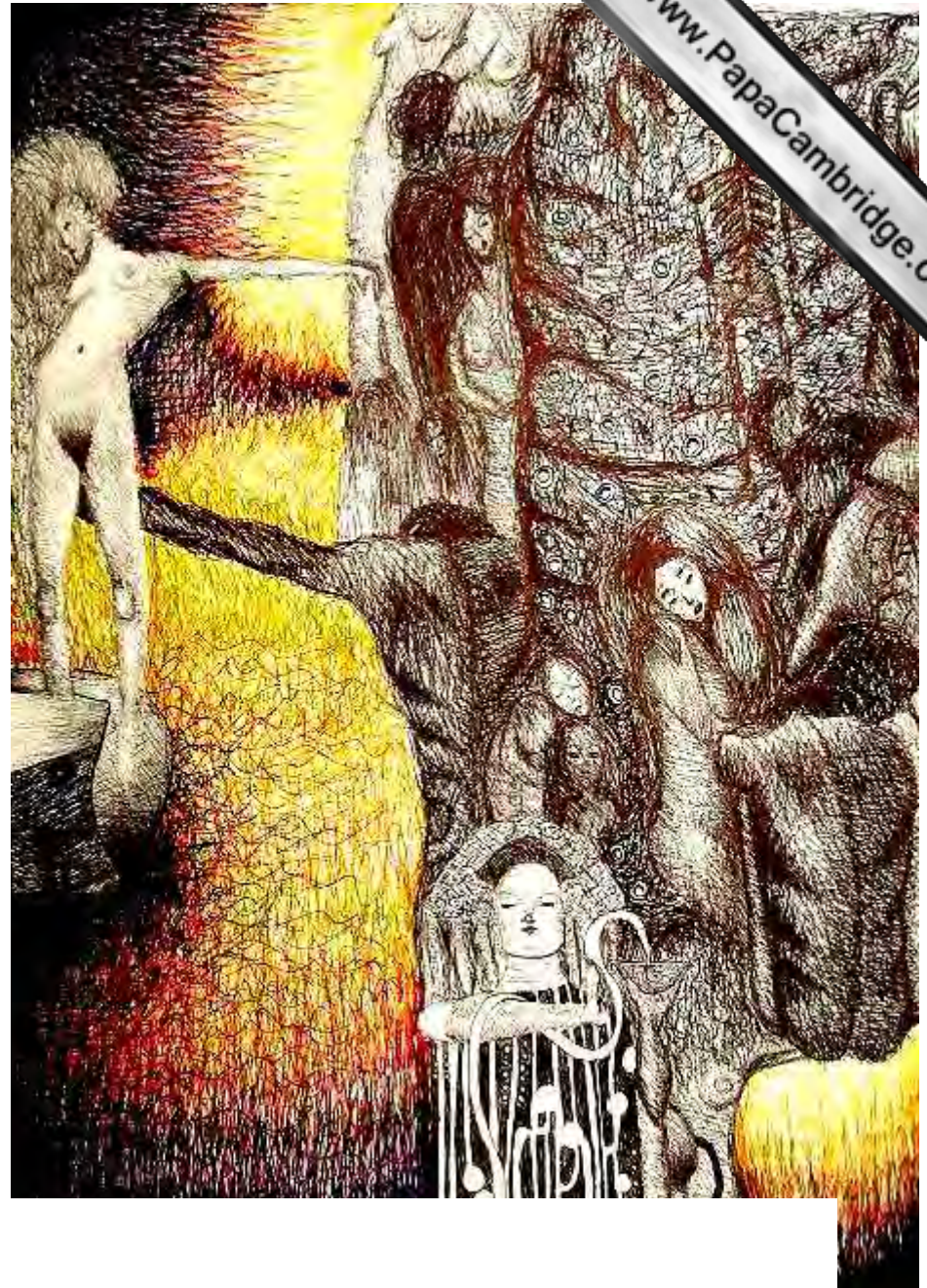


Preliminary Studies



Standard 88

A: Knowledge with Understanding			
1	recognise and render form and structure	15	12
2	appreciate space and spatial relationships in two or three dimensions and understand space in terms of pictorial organisation	15	12
3	use chosen media competently, showing clarity of intention and be able to explore surface qualities	10	9
4	handle tone and/or colour in a controlled and intentioned manner	10	9
B Interpretative and Creative Response			
5	express ideas visually	7	7
6	respond in an individual and personal way	7	7
7	demonstrate quality of idea as seen by interpretation rather than literal description of a theme	10	9
8	make informed aesthetic judgements	6	6
C Personal Investigation and Development			
9	show personal vision and commitment, through a mature and committed response	10	9
10	research appropriate resources	5	4
11	assess a design problem and arrive at an appropriate solution	-	
12	show development of ideas through appropriate processes, worksheets before arriving at a final solution	5	4





Details







Preliminary Studies

Standard 84

A: Knowledge with Understanding			
1	recognise and render form and structure	15	12
2	appreciate space and spatial relationships in two or three dimensions and understand space in terms of pictorial organisation	15	12
3	use chosen media competently, showing clarity of intention and be able to explore surface qualities	10	8
4	handle tone and/or colour in a controlled and intentioned manner	10	8
B Interpretative and Creative Response			
5	express ideas visually	7	7
6	respond in an individual and personal way	7	7
7	demonstrate quality of idea as seen by interpretation rather than literal description of a theme	10	8
8	make informed aesthetic judgements	6	6
C Personal Investigation and Development			
9	show personal vision and commitment, through a mature and committed response	10	8
10	research appropriate resources	5	4
11	assess a design problem and arrive at an appropriate solution	-	
12	show development of ideas through appropriate processes, worksheets before arriving at a final solution	5	4



Detail



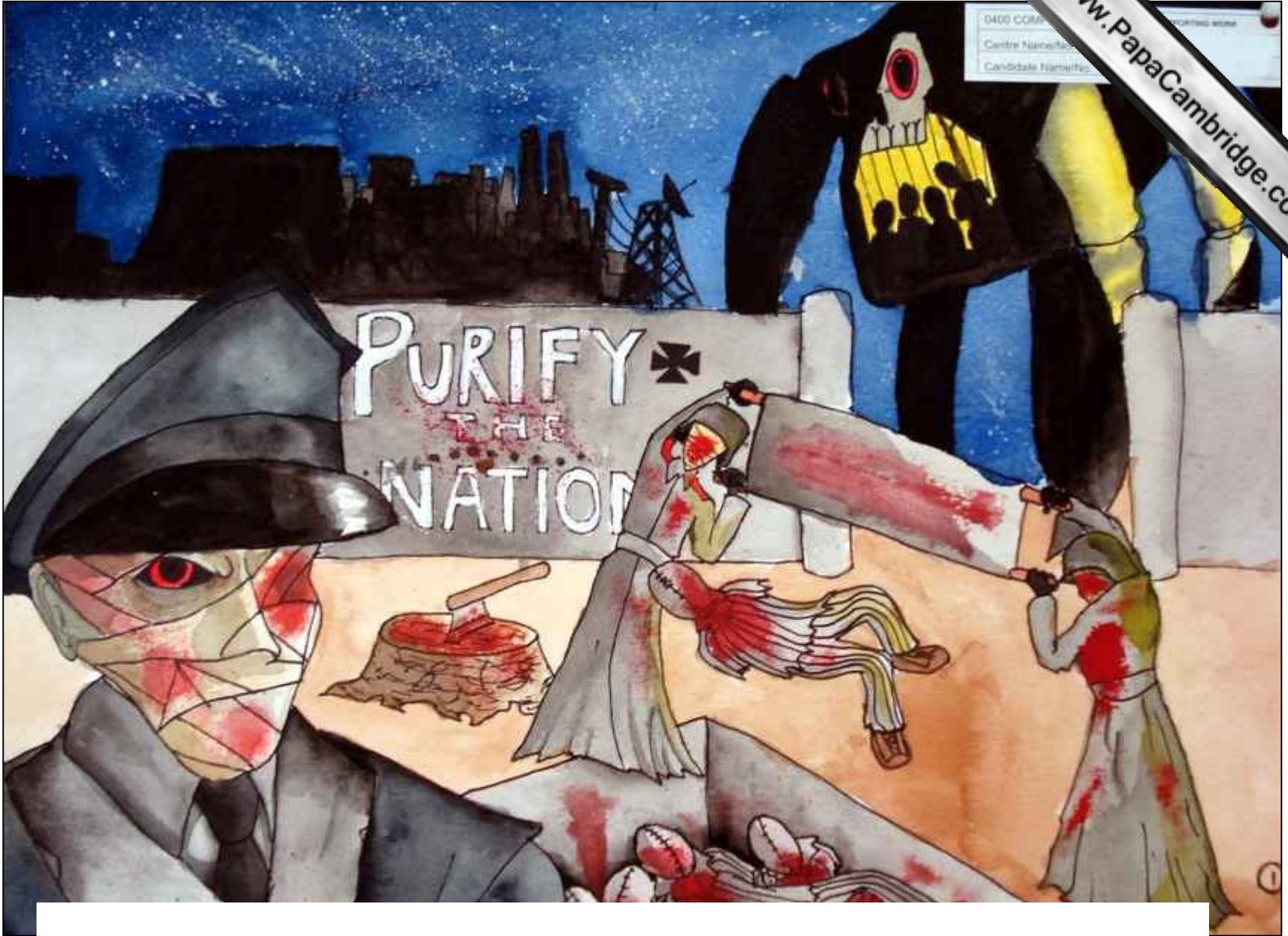


Preliminary Studies



F





Standard 80

A: Knowledge with Understanding			
1	recognise and render form and structure	15	11
2	appreciate space and spatial relationships in two or three dimensions and understand space in terms of pictorial organisation	15	11
3	use chosen media competently, showing clarity of intention and be able to explore surface qualities	10	8
4	handle tone and/or colour in a controlled and intentioned manner	10	7
B Interpretative and Creative Response			
5	express ideas visually	7	7
6	respond in an individual and personal way	7	7
7	demonstrate quality of idea as seen by interpretation rather than literal description of a theme	10	8
8	make informed aesthetic judgements	6	5
C Personal Investigation and Development			
9	show personal vision and commitment, through a mature and committed response	10	8
10	research appropriate resources	5	4
11	assess a design problem and arrive at an appropriate solution	-	
12	show development of ideas through appropriate processes, worksheets before arriving at a final solution	5	4










Hand in a Holding
That I see my old parents
Among all of your friends
But knowing I know
The people it is important
To be with me, that will
grow up.

I know how much
Loving them, I know
How much love and
Care me, a lot of things
together would be, very.



I think that I will have
that which will be with
You, I know from people
The people I know
I want to know a little that
how the world
that looking something
I think it will which
It can help me to help
look like the world because
it's your help.

Preliminary Studies

Standard 79

A: Knowledge with Understanding			
1	recognise and render form and structure	15	12
2	appreciate space and spatial relationships in two or three dimensions and understand space in terms of pictorial organisation	15	11
3	use chosen media competently, showing clarity of intention and be able to explore surface qualities	10	7
4	handle tone and/or colour in a controlled and intentioned manner	10	8
B Interpretative and Creative Response			
5	express ideas visually	7	6
6	respond in an individual and personal way	7	6
7	demonstrate quality of idea as seen by interpretation rather than literal description of a theme	10	9
8	make informed aesthetic judgements	6	5
C Personal Investigation and Development			
9	show personal vision and commitment, through a mature and committed response	10	7
10	research appropriate resources	5	4
11	assess a design problem and arrive at an appropriate solution	-	
12	show development of ideas through appropriate processes, worksheets before arriving at a final solution	5	4



Final piece





P



Preliminary Studies

Standard 71

A: Knowledge with Understanding			
1	recognise and render form and structure	15	10
2	appreciate space and spatial relationships in two or three dimensions and understand space in terms of pictorial organisation	15	10
3	use chosen media competently, showing clarity of intention and be able to explore surface qualities	10	7
4	handle tone and/or colour in a controlled and intentioned manner	10	6
B Interpretative and Creative Response			
5	express ideas visually	7	6
6	respond in an individual and personal way	7	6
7	demonstrate quality of idea as seen by interpretation rather than literal description of a theme	10	8
8	make informed aesthetic judgements	6	5
C Personal Investigation and Development			
9	show personal vision and commitment, through a mature and committed response	10	6
10	research appropriate resources	5	3
11	assess a design problem and arrive at an appropriate solution	-	
12	show development of ideas through appropriate processes, worksheets before arriving at a final solution	5	4

Final piece





This is
a wo
ker b
using
A ble
used t
and f
to pre



Preliminary Studies



Preliminary Studies

Standard 70

A: Knowledge with Understanding			
1	recognise and render form and structure	15	10
2	appreciate space and spatial relationships in two or three dimensions and understand space in terms of pictorial organisation	15	11
3	use chosen media competently, showing clarity of intention and be able to explore surface qualities	10	7
4	handle tone and/or colour in a controlled and intentioned manner	10	7
B Interpretative and Creative Response			
5	express ideas visually	7	5
6	respond in an individual and personal way	7	5
7	demonstrate quality of idea as seen by interpretation rather than literal description of a theme	10	7
8	make informed aesthetic judgements	6	4
C Personal Investigation and Development			
9	show personal vision and commitment, through a mature and committed response	10	6
10	research appropriate resources	5	4
11	assess a design problem and arrive at an appropriate solution	-	
12	show development of ideas through appropriate processes, worksheets before arriving at a final solution	5	4

Preliminary Study







Preliminary Study





Preliminary Study

Standard 68

A: Knowledge with Understanding			
1	recognise and render form and structure	15	10
2	appreciate space and spatial relationships in two or three dimensions and understand space in terms of pictorial organisation	15	10
3	use chosen media competently, showing clarity of intention and be able to explore surface qualities	10	7
4	handle tone and/or colour in a controlled and intentioned manner	10	7
B Interpretative and Creative Response			
5	express ideas visually	7	5
6	respond in an individual and personal way	7	5
7	demonstrate quality of idea as seen by interpretation rather than literal description of a theme	10	7
8	make informed aesthetic judgements	6	4
C Personal Investigation and Development			
9	show personal vision and commitment, through a mature and committed response	10	6
10	research appropriate resources	5	4
11	assess a design problem and arrive at an appropriate solution	-	
12	development of ideas through appropriate processes, worksheets before arriving at a final solution	5	3

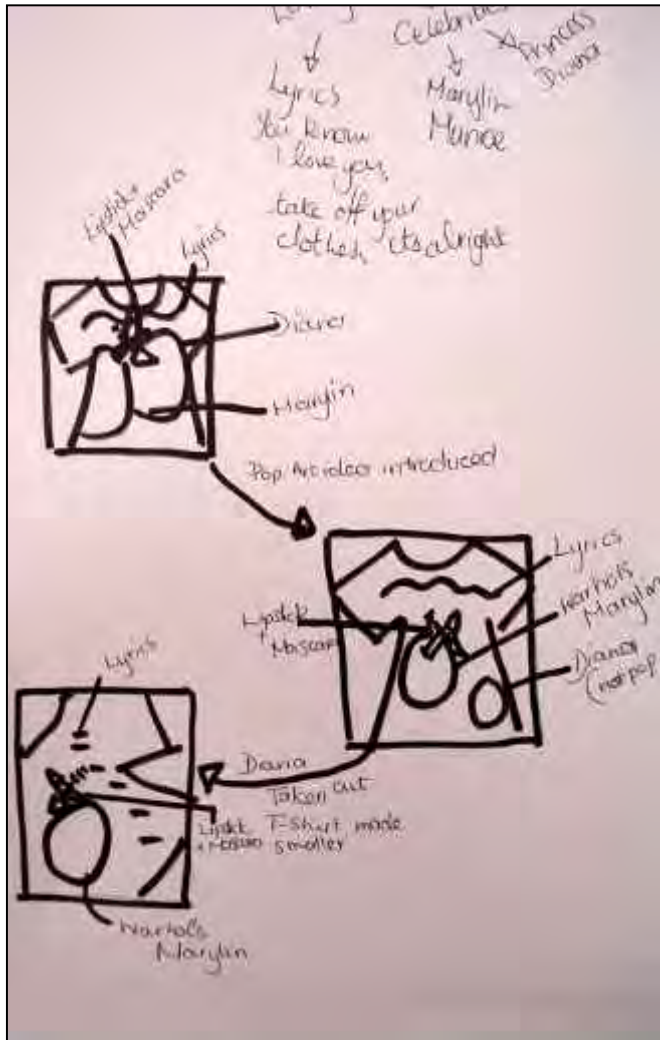
Final piece







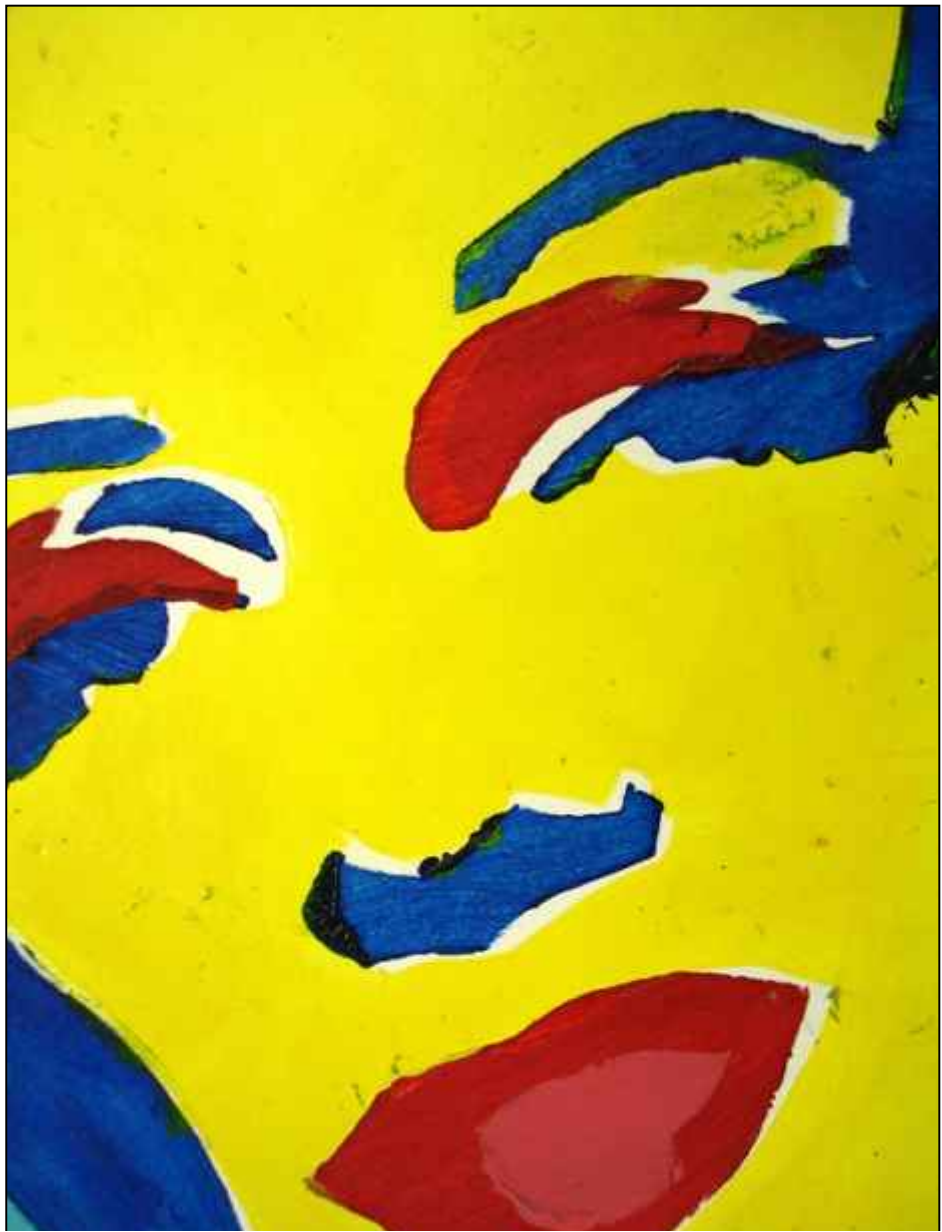
Preliminary Study



**YOU
KNOW
I
LOVE YOU,
TAKE
OFF
YOUR
CLOTHES,
ITS
ALRIGHT**

Preliminary Studies





Preliminary Study

Standard 63

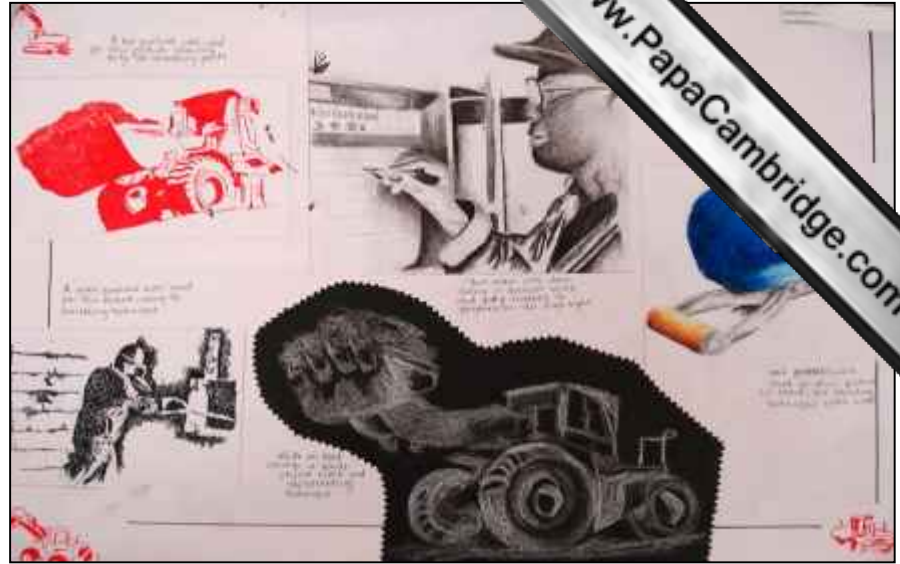
A: Knowledge with Understanding			
1	recognise and render form and structure	15	9
2	appreciate space and spatial relationships in two or three dimensions and understand space in terms of pictorial organisation	15	9
3	use chosen media competently, showing clarity of intention and be able to explore surface qualities	10	7
4	handle tone and/or colour in a controlled and intentioned manner	10	7
B Interpretative and Creative Response			
5	express ideas visually	7	5
6	respond in an individual and personal way	7	5
7	demonstrate quality of idea as seen by interpretation rather than literal description of a theme	10	6
8	make informed aesthetic judgements	6	3
C Personal Investigation and Development			
9	show personal vision and commitment, through a mature and committed response	10	6
10	research appropriate resources	5	4
11	assess a design problem and arrive at an appropriate solution	-	
12	development of ideas through appropriate processes, worksheets before arriving at a final solution	5	2

Preliminary Study





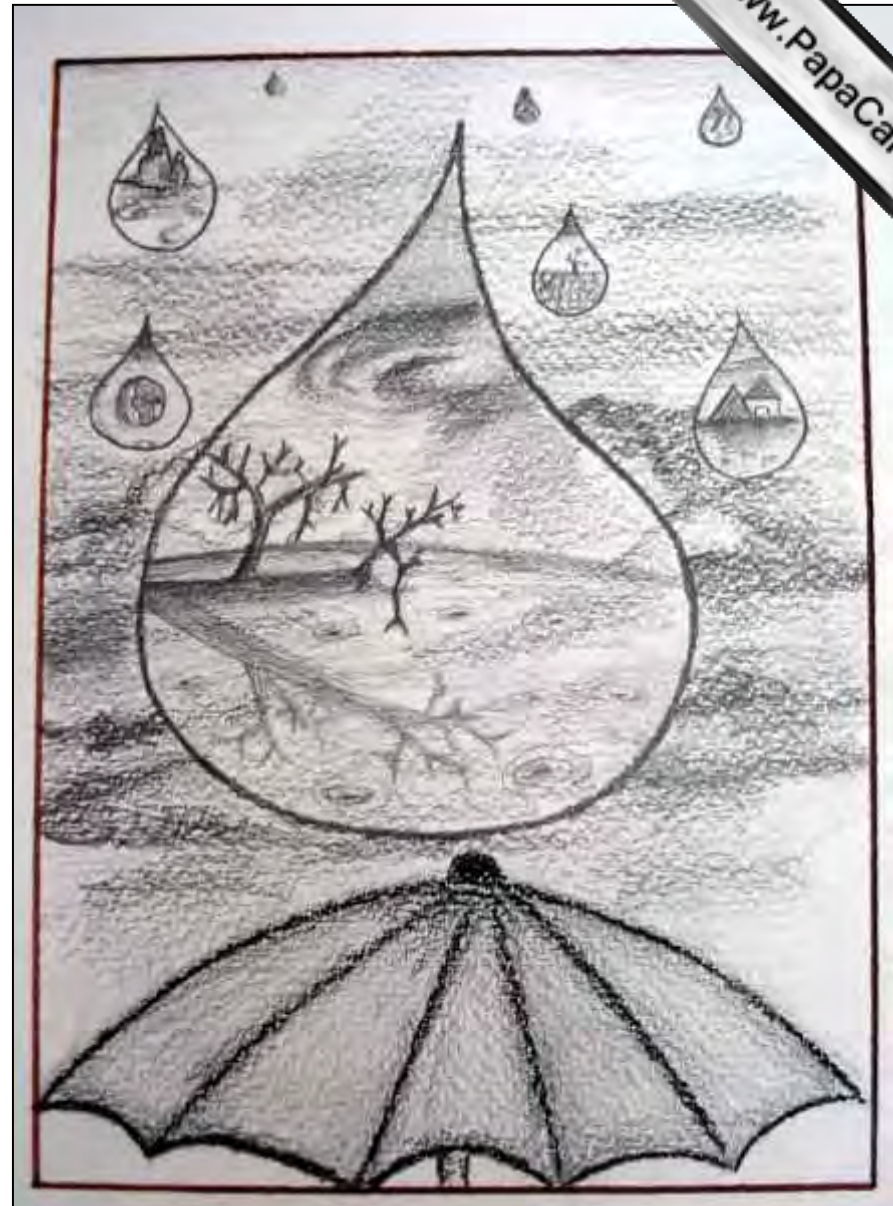
Final view



Standard 60

A: Knowledge with Understanding			
1	recognise and render form and structure	15	9
2	appreciate space and spatial relationships in two or three dimensions and understand space in terms of pictorial organisation	15	9
3	use chosen media competently, showing clarity of intention and be able to explore surface qualities	10	6
4	handle tone and/or colour in a controlled and intentioned manner	10	6
B Interpretative and Creative Response			
5	express ideas visually	7	5
6	respond in an individual and personal way	7	5
7	demonstrate quality of idea as seen by interpretation rather than literal description of a theme	10	5
8	make informed aesthetic judgements	6	3
C Personal Investigation and Development			
9	show personal vision and commitment, through a mature and committed response	10	6
10	research appropriate resources	5	4
11	assess a design problem and arrive at an appropriate solution	-	
12	development of ideas through appropriate processes, worksheets before arriving at a final solution	5	2

Preliminary Study

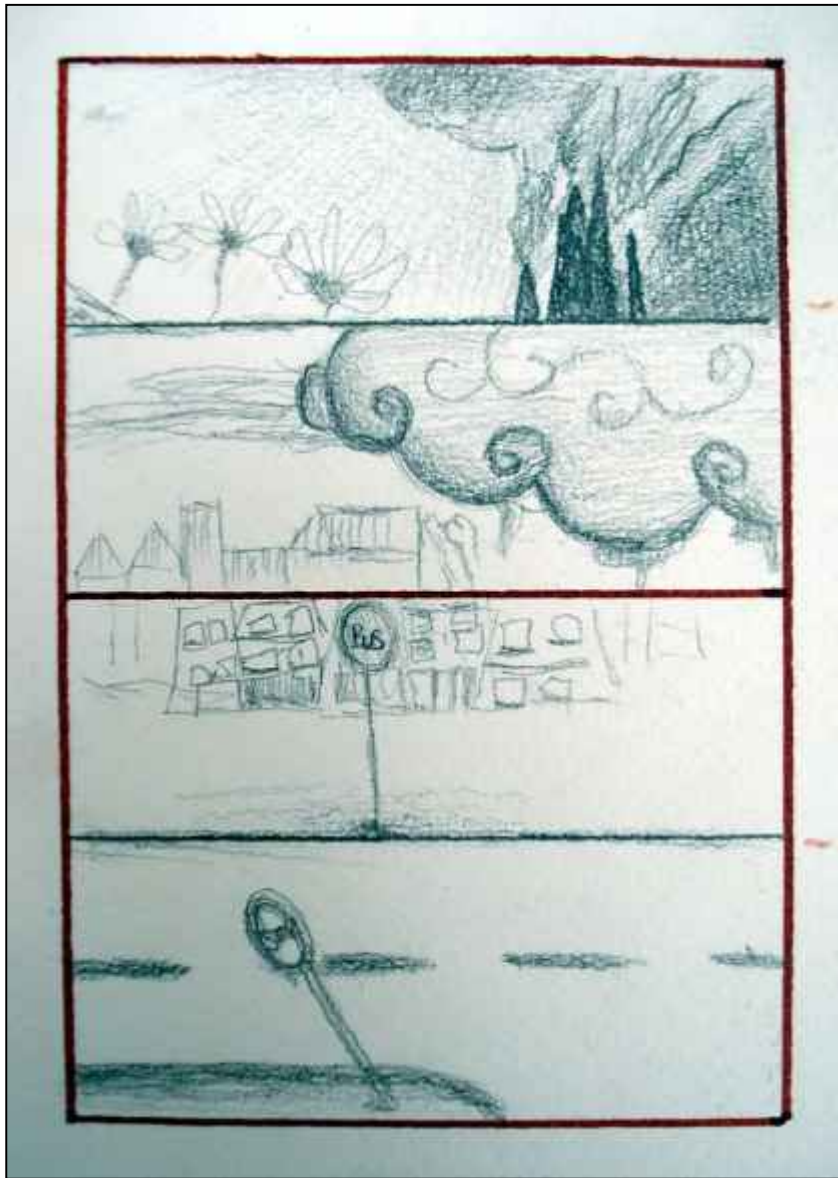




Final piece



In this picture, I mixed the ideas of my two pictures. I still remain the idea



www.PapaCambridge.com

Standard 49

A: Knowledge with Understanding			
1	recognise and render form and structure	15	8
2	appreciate space and spatial relationships in two or three dimensions and understand space in terms of pictorial organisation	15	8
3	use chosen media competently, showing clarity of intention and be able to explore surface qualities	10	5
4	handle tone and/or colour in a controlled and intentioned manner	10	5
B Interpretative and Creative Response			
5	express ideas visually	7	4
6	respond in an individual and personal way	7	4
7	demonstrate quality of idea as seen by interpretation rather than literal description of a theme	10	4
8	make informed aesthetic judgements	6	3
C Personal Investigation and Development			
9	show personal vision and commitment, through a mature and committed response	10	4
10	research appropriate resources	5	2
11	assess a design problem and arrive at an appropriate solution	-	
12	development of ideas through appropriate processes, worksheets before arriving at a final solution	5	2

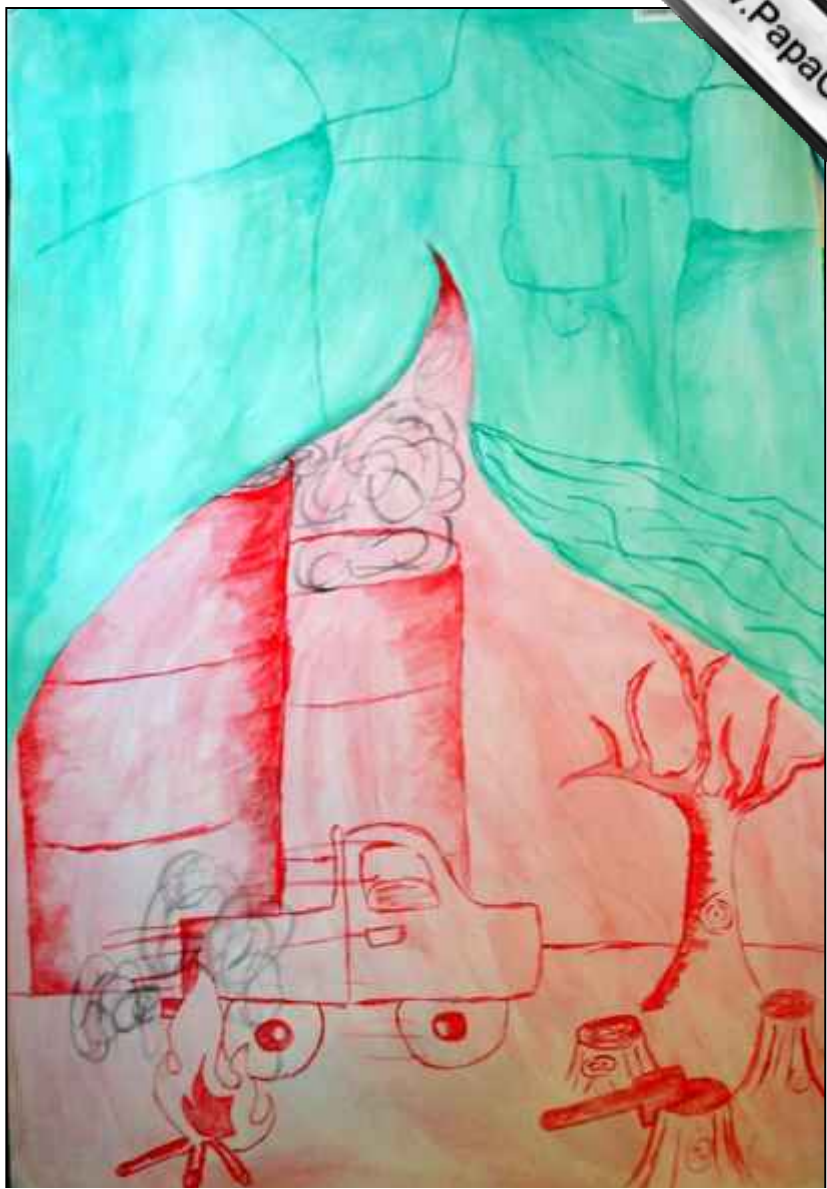




Detail



Preliminary Study



Preliminary Study

Standard 30

A: Knowledge with Understanding			
1	recognise and render form and structure	15	4
2	appreciate space and spatial relationships in two or three dimensions and understand space in terms of pictorial organisation	15	4
3	use chosen media competently, showing clarity of intention and be able to explore surface qualities	10	3
4	handle tone and/or colour in a controlled and intentioned manner	10	3
B Interpretative and Creative Response			
5	express ideas visually	7	3
6	respond in an individual and personal way	7	2
7	demonstrate quality of idea as seen by interpretation rather than literal description of a theme	10	3
8	make informed aesthetic judgements	6	1
C Personal Investigation and Development			
9	show personal vision and commitment, through a mature and committed response	10	3
10	research appropriate resources	5	2
11	assess a design problem and arrive at an appropriate solution	-	
12	development of ideas through appropriate processes, worksheets before arriving at a final solution	5	2



Final piece



Preliminary Studies

End